

G10/1 Cliff Road Epping NSW

2 2 1

Positioned quietly at the side of the building with a desirable west-facing aspect, this oversized ground floor apartment offers exceptional indoor-outdoor living and convenience.

Enjoy unbeatable accessibility, just a 1-minute walk to Coles and only 5 minutes to the train and metro station. Surrounded by buses, parks, schools, and everyday amenities, this home is perfect for both owner-occupiers and investors.

Key Features:

- Contemporary kitchen featuring 60mm stone benchtops
- Premium Miele appliances with gas cooking
- Smart, well-designed layout maximising space and

Type : Apartment

Price : Just Listed

View : <https://www.plusagency.com.au/sale/nsw/northern-suburbs/epping/residential/apartment/8692984>

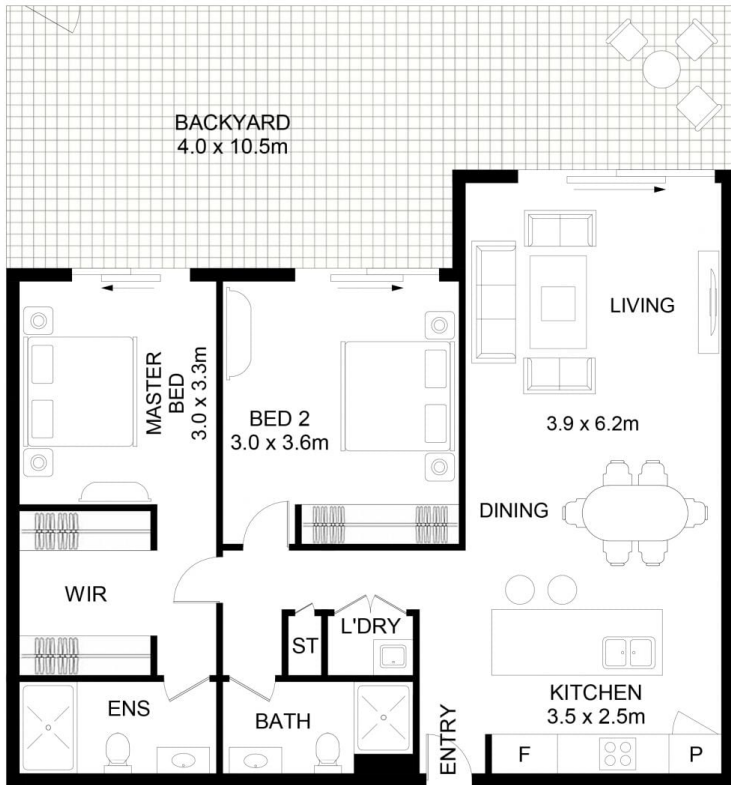


Fiona/Fengfeng Hu
0473 002 027

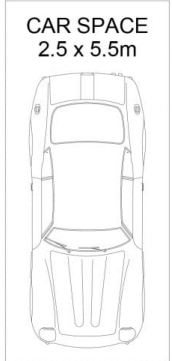


Hunter/Lijun Liu
0488 897 898

[For full version visit the website](https://www.plusagency.com.au)



STORAGE



PLUS
AGENCY

G10/1 CLIFF ROAD

Epping, NSW 2121

AREA

Internal Area : 81 m²
 External Area : 30 m²
 Total Area : 111 m²



Disclaimer: This plan is presented in good faith and is to be used as a guide. It does not constitute an offer or contract. All area sizes indicated are approximate only. Positions of furniture, fittings and the like are not indicative of final positioning.