



**207/1 Cliff Road Epping NSW**

2 2 1

Perfectly situated in the vibrant heart of Epping, this impressive and generously sized apartment delivers contemporary comfort with unbeatable convenience. Enjoy a short stroll to Epping Station, local bus stops, Epping town centre, Coles, shops, cafés, and restaurants.

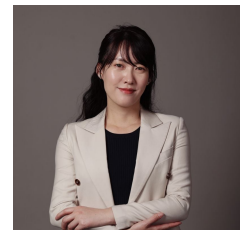
**Type** : Apartment  
**Price** : Contact Agent  
**View** : <https://www.plusagency.com.au/sale/nsw/northern-suburbs/epping/residential/apartment/8688326>

**Property Features:**

- Expansive open-plan living and dining area flowing seamlessly to a covered alfresco balcony
- Gourmet kitchen with stone benchtops, island bench, Miele appliances, and gas cooking
- Two spacious bedrooms with built-in wardrobes; master bedroom includes a private ensuite
- Stylish fully tiled bathrooms with oversized showers
- Ducted, zoned air conditioning and video intercom system

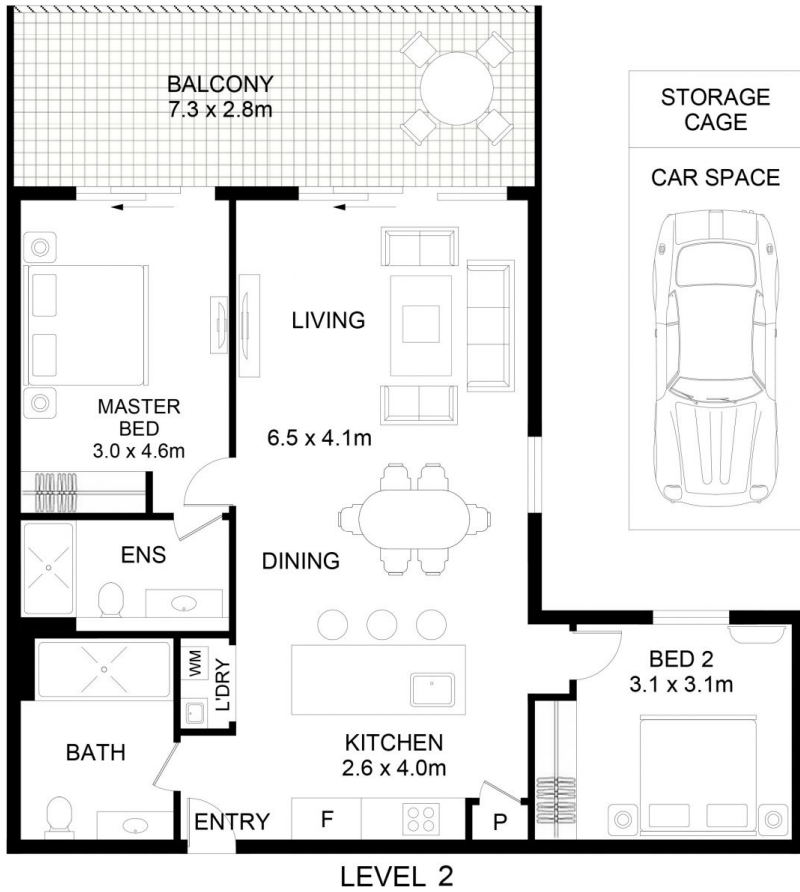


**Hunter/Lijun Liu**  
0488 897 898



**Fiona/Fengfeng Hu**  
0473 002 027

[For full version visit the website](https://www.plusagency.com.au)



**PLUS**  
AGENCY

**207/1 CLIFF ROAD**

Epping, NSW 2121

**AREA**

Internal Area : 79 m<sup>2</sup>  
 External Area : 19 m<sup>2</sup>  
 Total Area : 98 m<sup>2</sup>



Disclaimer: This plan is presented in good faith and is to be used as a guide. It does not constitute an offer or contract. All area sizes indicated are approximate only. Positions of furniture, fittings and the like are not indicative of final positioning.