



16 Riverside Avenue Putney NSW

Located at 16 Riverside Ave, Putney, NSW, Riverside Residences is a luxury development of two architecturally designed duplexes by Dimension Capital and Wen Architects. These exquisite 4-bedroom, 3-bathroom homes, each with 4-car spaces and private pools, offer spacious living with a land size of 298 sqm per duplex. The built areas are 242 sqm for duplex one and 247 sqm for duplex two, featuring premium finishes ideal for modern family living.

? Prime Location: Situated in a family-friendly suburb known for its tranquil riverside lifestyle and proximity to Sydney's bustling hubs. ? Superior Design: Thoughtful layout with high-end finishes for luxury living in a peaceful environment.

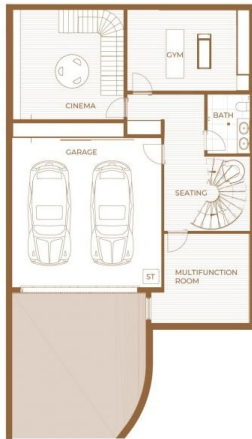
Type : Apartment

View : <https://www.plusagency.com.au/sale/nsw/northern-suburbs/putney/project/apartment/8191839>



Roger/Li Zhu
1300 572 155

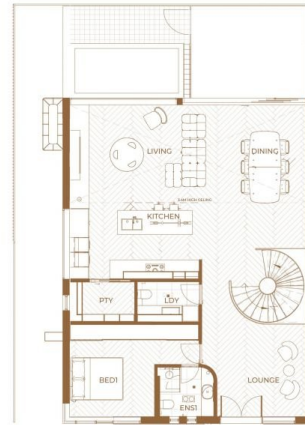
[For full version visit the website](https://www.plusagency.com.au)



BASEMENT



GROUND FLOOR



FIRST FLOOR



DUPLEX

Duplex A, 16 Riverside Avenue,
Putney NSW 2112

AREA

Land Size : 291 sqm
Total Build Area : 282 sqm



Disclaimer:
 1. Please note, this layout plan was produced prior to construction.
 2. The information is believed to be correct, but is not guaranteed.
 3. Changes may be made during construction and dimensions, areas, fittings, finishes and specification are subject to change without notice in positions of power points, tv connection points and the like.
 4. Prospective purchasers must rely on their own enquiries.
 5. All graphics including the layout and balustrades and the like are indicative only.
 6. Balustrades for services are not depicted.
 7. The layout plan is at an unspecified scale.
 8. All furniture not included.