



**A108/53 Nancarrow Avenue Ryde NSW**

2 🛏 2 🚿 1 🚗

Nestled within the meticulously designed Shepherds Bay community lies a haven that transcends mere living spaces, offering a refined lifestyle enriched by unparalleled amenities seamlessly integrated beneath the buildings, accompanied by picturesque waterfront promenades. These newly constructed apartments stand as epitomes of value, gracing Sydney's waterfront with their allure.

**View :** <https://www.plusagency.com.au/sale/nsw/northern-suburbs/ryde/residential/apartment/8015220>

Positioned along the banks of the Parramatta River, Shepherds Bay apartments not only afford captivating water vistas but also grant access to tranquil foreshore gardens and an array of leisure pursuits within easy reach.



**Hunter Liu**  
**0488 897 898**

**LOCATION**

? Strategically convenient with just 20 minutes from Sydney CBD, 15 minutes to Paramatta CBD and moments' walk to Meadowbank train station, buses and ferry wharf.

APARTMENT

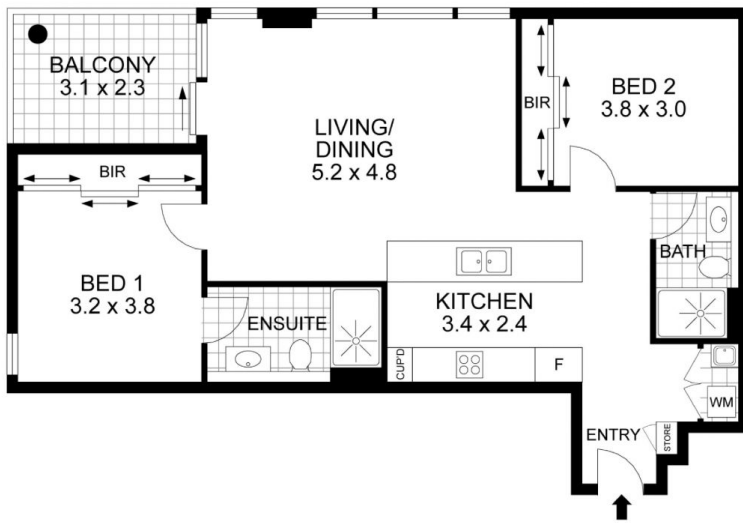
A108/53 Nancarrow Ave  
Meadowbank, NSW 2114

AREA

Total Strata Size: 97 m<sup>2</sup>



Disclaimer: This plan is presented in good faith and is to be used as a guide. It does not constitute an offer or contract. All area sizes indicated are approximate only. Positions of furniture, fittings and the fix are not indicative of final positioning.



CARSPACE

