



**B1305/12 Nancarrow Avenue Meadowbank NSW**

2 🛏 2 🚿 2 🚗

Exceptional waterfront living of Shepherds Bay master planned community brings new life and energy to the water's edge. Celebrated waterside living, green space, stunning views, and leisure on your doorstep.

**View :** <https://www.plusagency.com.au/sale/nsw/northern-suburbs/meadowbank/residential/apartment/7958293>

Established on the Parramatta River, Shepherds Bays apartment offers not only the water views but also the foreshore gardens and other leisure options within the vicinity in the true heart of Sydney.

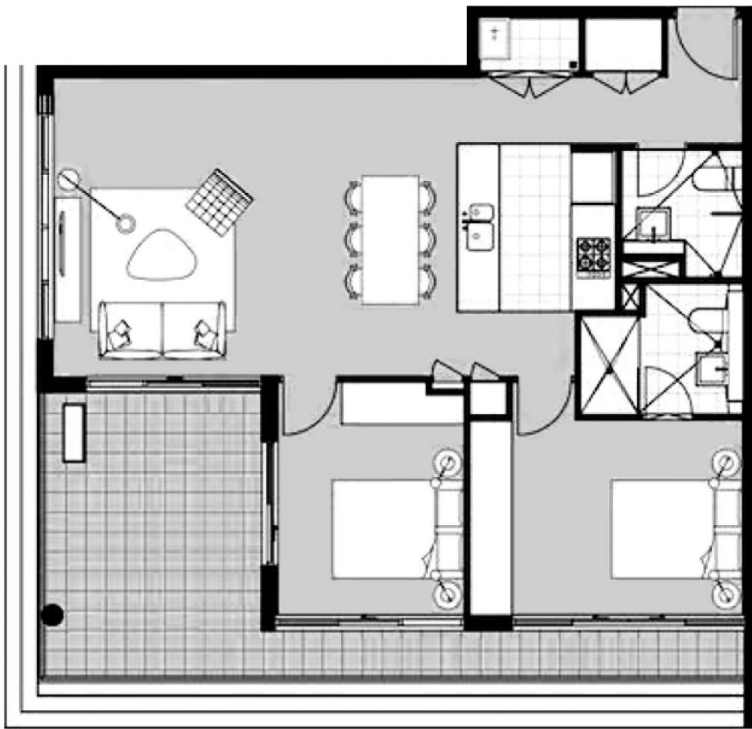


**Hunter Liu**  
**0488 897 898**

**LOCATION**

? Strategically convenient with just 20 minutes from Sydney CBD, 15 minutes to Paramatta CBD and moment walk to Meadowbank train station, buses and ferry wharf.

? Close proximity to Sydney Olympic Park, Rhodes Shopping Centre, Top Ryde Shopping Centre, Macquarie University and much more.



**PLUS**  
— REALTY AGENCY —

**APARTMENT  
2 BEDROOMS**

1305B / 12 Nancarrow Ave,  
Meadowbank NSW 2114

**AREA**

Total Strata Size: **125 m<sup>2</sup>**



Disclaimer:  
This plan is presented in good faith and is to be used as a guide. It does not constitute an offer or contract. All area sizes indicated are approximate only. Positions of furniture, fittings and the like are not indicative of final positioning.