



Location Shot



Location Shot



B1206/12 Nancarrow Avenue Meadowbank NSW

1 1 1

Exceptional waterfront living of Shepherds Bay master planned community brings new life and energy to the water's edge. Celebrated waterside living, green space, stunning views, and leisure on your doorstep.

Established on the Parramatta River, Shepherds Bays apartment offers not only the water views but also the foreshore gardens and other leisure options within the vicinity in the true heart of Sydney.

The perfect location:

?Just 20 minutes from Sydney CBD, 15 minutes to Paramatta CBD, and a short walk to Meadowbank train station, buses, and ferry wharf.

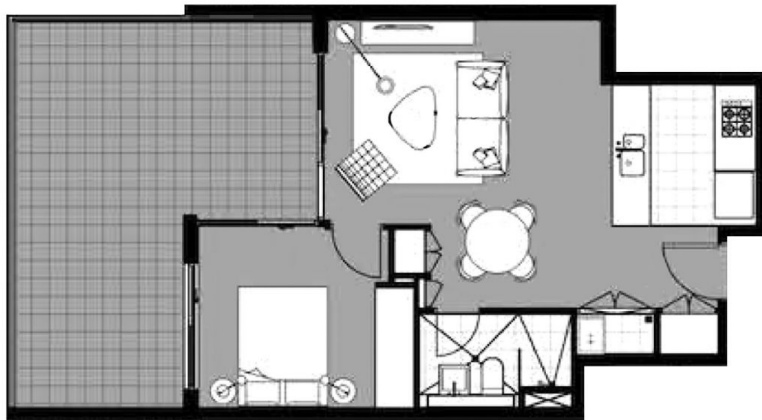
?Enjoy easy access to Sydney Olympic Park, Rhodes Shopping Centre, Top Ryde shopping centre, and Macquarie University.

Price : Contact Agent

View : <https://www.plusagency.com.au/sale/nsw/northern-suburbs/meadowbank/residential/apartment/7958292>



Hunter Liu
0488 897 898



PLUS
— REALTY AGENCY —

**APARTMENT
1 BEDROOM**

1206B /12 Nancarrow Ave,
Meadowbank NSW 2114

AREA

Total Strata Size: **89 m²**



Disclaimer:
This plan is presented in good faith and is to be used as a guide. It does not constitute an offer or contract. All area sizes indicated are approximate only. Positions of furniture, fittings and the like are not indicative of final positioning.