



Artist's Impression



Artist's Impression



Artist's Impression



Artist's Impression

Lot 9/1-11 Fairway Drive Kellyville NSW

4 2 2

This brand new housing estate offers a range of options, including the choice to purchase the land only or opt for a complete house and land package.

The house and land package features a spacious 4-bedroom, 2.5-bathroom home with a double garage, designed to suit modern lifestyles. With the land already registered, you can start building your dream home almost immediately after settlement, saving you time and hassle.

One of the key highlights of this property is its proximity to amenities and green spaces. You'll be just a 5-minute walk from the new Kellyville Memorial Park Reserve, perfect for outdoor activities and leisurely strolls. Additionally, the Norwest metro station is a mere 5-minute drive away, providing easy access to the rest of Sydney.

Price : Contact Agent

View : <https://www.plusagency.com.au/sale/nsw/hills/kellyville/residential/house/7957846>



One Fairway Kellyville
1300 604 177

ONE

- FAIRWAY -

LOT 9

1-11 Fairway Drive, Kellyville



290.2m²



222.2m²



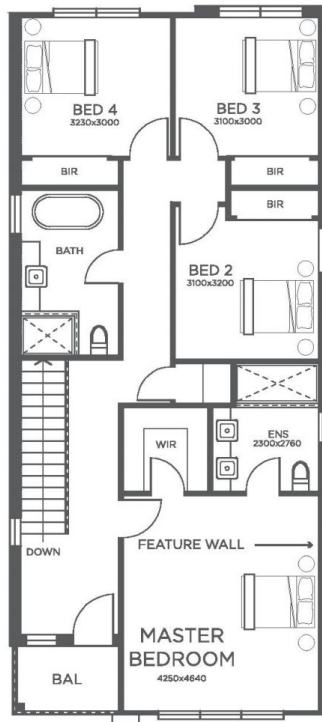
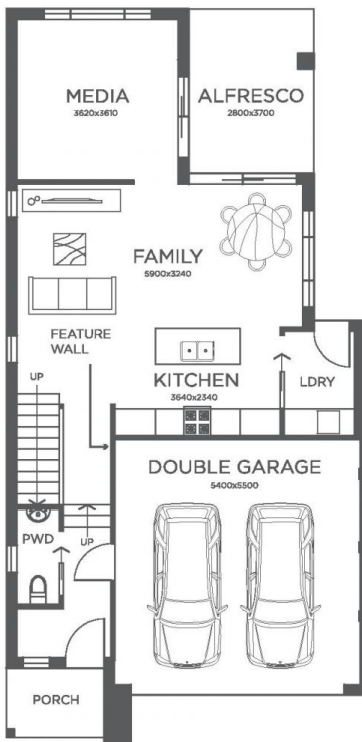
4



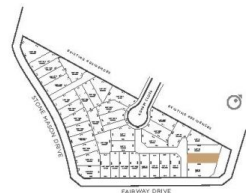
2.5



2



LOT LOCATION



Disclaimer: This floor plan has been based on a standard facade, not the one depicted in the artist's impression and has been produced for marketing purposes and may not be representative of the final facade application and is to be used as a guide only. Floor plans are not to scale and do not contain all details included in the Inclusions of the project and should not be relied upon for exact dimensions. All efforts have been made to ensure its accuracy at the time of production. During the design development, approval process, construction drawing and detailing process, plans may require alterations, resulting in changes to sizes and/or layouts, and the visual appearance of the designs.