

303/305A Pacific Highway Lindfield NSW

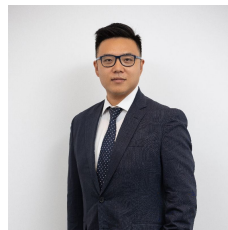
2 🛏 2 🚿 2 🚗

Village Lane is perfectly positioned within footsteps of Lindfield Train Station, village shops, and restaurants, giving you the best of both worlds - the serenity of a quiet community, and the convenience of a bustling urban centre. A boutique collection of luxury 1, 2, and 3 bedroom apartments. Meticulously designed by award-winning architects SJB, Village Lane offers the perfect blend of sophisticated interiors and leafy, green outdoor living in the beating heart of Lindfield's new village.

Price : \$ 1,560,000

View : <https://www.plusagency.com.au/sale/nsw/north-sydney-upper/lindfield/residential/apartment/7816232>

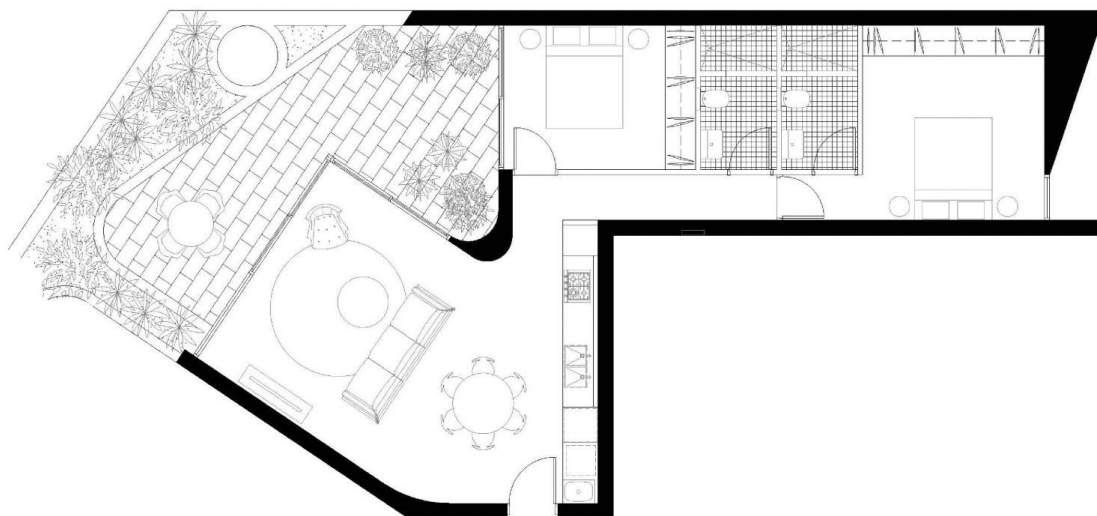
Each of the two bedrooms in this home is a sanctuary of privacy and comfort. The master bedroom is notably spacious, boasting a large wardrobe that opens into a private ensuite with a sizeable shower space. The second bedroom does not fall short, adorned with sleek, mirrored wardrobes.



Joe/Jiangzhou Sun
0420 801 983



Olivia Yang
0499 113 113



APARTMENT

305 Pacific Highway,
Lindfield NSW 2070

Total Living Area: 106 m²
Total Strata Area: 141 m²

2
BEDROOM

2
BATHROOM

2
CAR SPACE

1300 572 155

lumex PLUS
AGENCY

DISCLAIMER:
1. Please note, this layout plan was produced prior to construction.
2. The information is believed to be correct, but is not guaranteed.
3. Changes may be made during construction and dimensions, areas, fittings, finishes and production are subject to change without notice in positions of power points, in connection panels and the like.
4. Prospective purchasers must rely on their own enquiries.
5. All graphics including the layout and bathrooms and the like are indicative only.
6. Bathrooms for services are not depicted.
7. The layout plan is at an un-scaled scale.
8. All furniture not included.