



**C102/2-8 Pymble Avenue Pymble NSW**

2 2 1

This brand new 'Cascade Gardens' luxury collection is located amongst Pymble's abundant parkland and leafy surrounds. This project is perfect for those looking for classy, refined, tranquil and low maintenance property for own stay or investment.

**Type** : Apartment

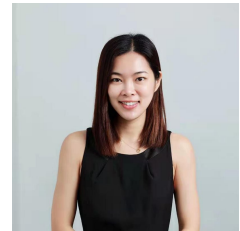
**View** : <https://www.plusagency.com.au/sale/nsw/north-s-hore-upper/pymble/residential/apartment/7538418>

The newly completed Cascade Gardens strategically situated with close proximity to many amenities as below:

- 2 minutes' walk to Pymble Station
- 150 m to Pymble Ladies College
- 15 minutes drive to Chatswood CBD
- 3 minutes drive to Avondale Golf Course
- 6 minutes drive to Lane Cove National Park
- 30 minutes to Sydney CBD

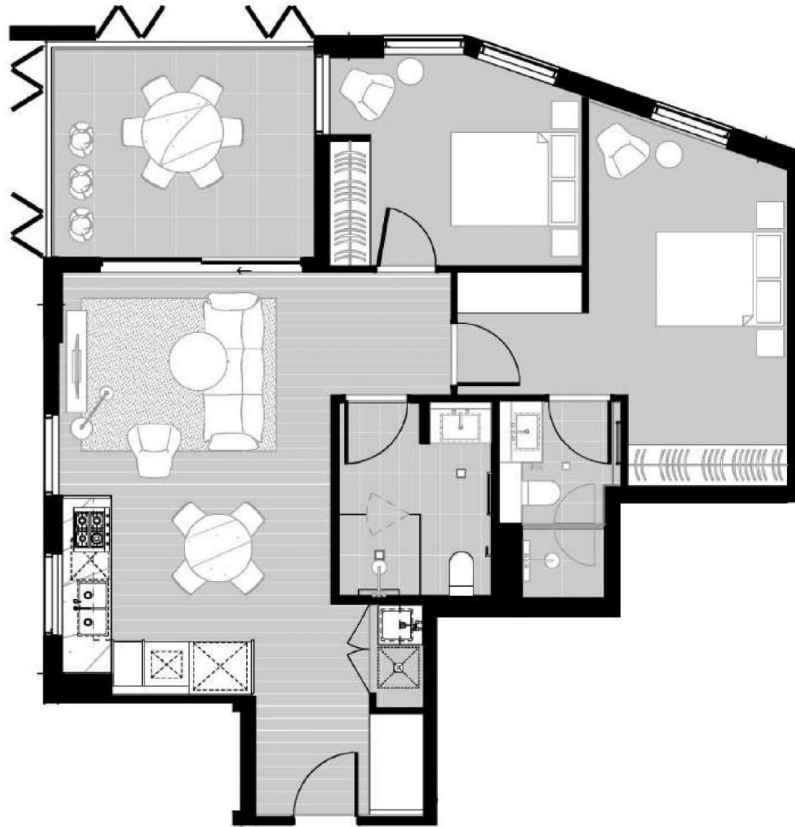


**Owen Su**  
0468 534 360



**Stephenie Wong**  
0411 820 677

[For full version visit the website](https://www.plusagency.com.au)



PLUS  
AGENCY

APARTMENT

C102/ 8 Pymble Avenue,  
Pymble NSW 2073

AREA

Total Area:  
Approx 88 m<sup>2</sup>



Disclaimer:  
This plan is presented in good faith and is to be used as a guide. It does not constitute an offer or contract. All area sizes indicated are approximate only. Positions of furniture, fittings and the like are not indicative of final positioning.