



CG05/2-8 Pymble Avenue Pymble NSW

2 2 1

This brand new 'Cascade Gardens' luxury collection is located amongst Pymble's abundant parkland and leafy surrounds. This project is perfect for those looking for classy, refined, tranquil and low maintenance property for own stay or investment.

Type : Apartment
View : <https://www.plusagency.com.au/sale/nsw/north-s-hore-upper/pymble/residential/apartment/7538376>

The newly completed Cascade Gardens strategically situated with close proximity to many amenities as below:

- 2 minutes walk to Pymble Station
- 150 m to Pymble Ladies College
- 15 minutes drive to Chatswood CBD
- 3 minutes drive to Avondale Golf Course
- 6 minutes drive to Lane Cove National Park
- 30 minutes to Sydney CBD

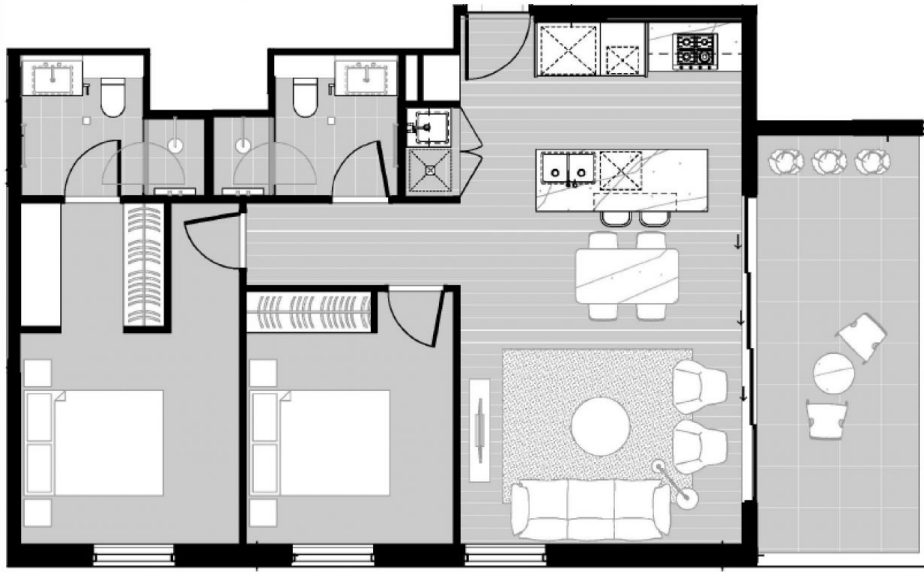


Stephenie Wong
0411 820 677



Owen Su
0468 534 360

[For full version visit the website](https://www.plusagency.com.au)



PLUS
— REALTY AGENCY —

APARTMENT
2 BEDROOMS

CG05 / 8 Pymble Avenue,
Pymble NSW 2073

AREA

Total: Approx 91m²



Disclaimer:
This plan is presented in good faith and is to be used as a guide. It does not constitute an offer or contract. All area sizes indicated are approximate only. Positions of furniture, fittings and the like are not indicative of final positioning.