



**C106/2-8 Pymble Avenue Pymble NSW**

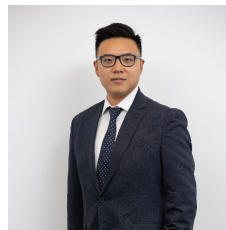
2 2 2

This brand new 'Cascade Gardens' luxury collection is located amongst Pymble's abundant parkland and leafy surrounds. This project is perfect for those looking for classy, refined, tranquil and low maintenance property for own stay or investment.

**Type** : Apartment  
**View** : <https://www.plusagency.com.au/sale/nsw/north-s-hore-upper/pymble/residential/apartment/7538366>

The newly completed Cascade Gardens strategically situated with close proximity to many amenities as below:

- 2 minutes' walk to Pymble Station
- 150 m to Pymble Ladies College
- 15 minutes drive to Chatswood CBD
- 3 minutes drive to Avondale Golf Course
- 6 minutes drive to Lane Cove National Park
- 30 minutes to Sydney CBD

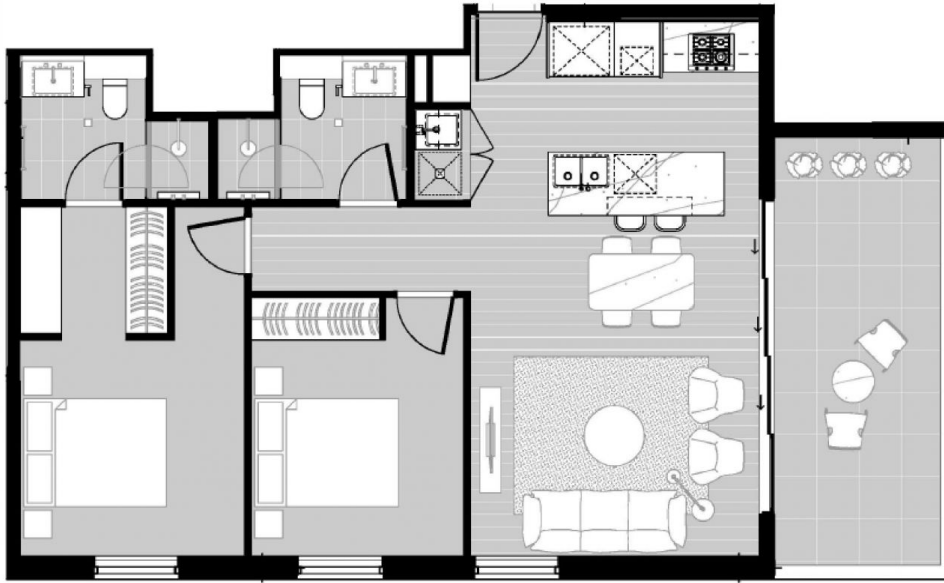


**Joe/Jiangzhou Sun**  
0420 801 983



**Stephenie Wong**  
0411 820 677

[For full version visit the website](https://www.plusagency.com.au)



PLUS  
— REALTY AGENCY —

APARTMENT  
2 BEDROOMS

C106 / 8 Pymble Avenue,  
Pymble NSW 2073

AREA

Total: Approx **91m<sup>2</sup>**



Disclaimer:  
This plan is presented in good faith and is to be  
used as a guide. It does not constitute an offer or  
contract. All area sizes indicated are approximate  
only. Positions of furniture, fittings and the like  
are not indicative of final positioning.