



B601/8 Pymble Avenue Pymble NSW

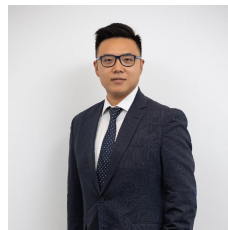
2 2 1

This brand new 'Cascade Gardens' luxury collection is located amongst Pymble's abundant parkland and leafy surrounds. This project is perfect for those looking for classy, refined, tranquil and low maintenance property for own stay or investment.

Type : Apartment
View : <https://www.plusagency.com.au/sale/nsw/north-s-hore-upper/pymble/residential/apartment/7538281>

The newly completed Cascade Gardens strategically situated with close proximity to many amenities as below:

- 2 minutes walk to Pymble Station
- 150 m to Pymble Ladies College
- 15 minutes drive to Chatswood CBD
- 3 minutes drive to Avondale Golf Course
- 6 minutes drive to Lane Cove National Park
- 30 minutes to Sydney CBD

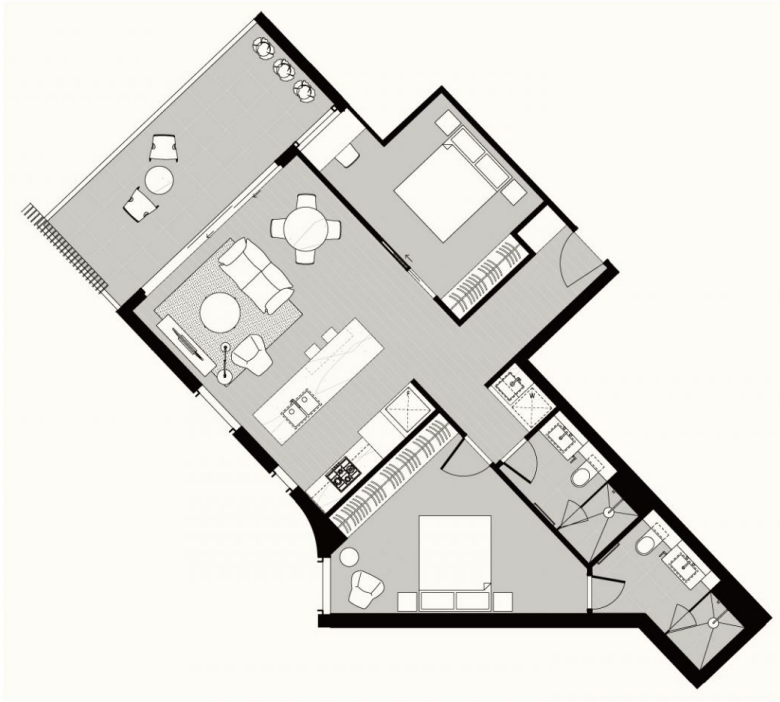


Joe/Jiangzhou Sun
0420 801 983



Stephenie Wong
0411 820 677

[For full version visit the website](https://www.plusagency.com.au)



PLUS
AGENCY

Total: Approx. 90m²

B601/8 Pymble
Avenue, Pymble
NSW 2073



Disclaimer:
This plan is presented in good
faith and is to be used as a guide.
It does not constitute an offer or
contract. All area sizes indicated
are approximate only. Positions of
furniture, fittings and the like are
not indicative of final positioning.